

The possibilities are endless...



Eco Smart Walk in Stability Chamber



**Smart Power Saving by approx 70%
& Water Saving by approx 90%**

Technical Specification :

Temperature Range : 20°C - 60 °C
Humidity Range : 40 %RH - 95 %RH
Accuracy : ± 0.5 °C / ± 2.0 %RH
Uniformity : ± 2.0 °C / ± 3.0 %RH
Suitable for : 25°C & 60 %RH, 30°C & 65 %RH,
 40°C & 75 %RH, 30°C & 75 %RH

Models	Capacity in Liters	Internal Dimension In MM			External Dimension In MM			Rack Qty.	No. of Trays
		Width	Depth	Height	Width	Depth	Height		
KGeWS-8KL	8004 LTR	1850	2080	2080	1970	2200	2200	2	16
KGeWS-10KL	10005 LTR	1850	2600	2080	1970	2720	2200	2	24
KGeWS-12KL	12020 LTR	1850	2730	2380	1970	2850	2500	2	24
KGeWS-16KL	16065 LTR	2250	3000	2380	2370	3120	2500	2	24
KGeWS-18KL	18100 LTR	2250	3380	2380	2370	3500	2500	2	32
KGeWS-20KL	20028 LTR	2250	3740	2380	2370	3860	2500	2	32
KGeWS-24KL	24200 LTR	2480	4100	2380	2600	4220	2500	2	32

NOTE : Extra Trays will provide on request as per capacity of chamber Other Sizes and Customize models are available on request.

Features



Low Power
Consumption



Less Water
Consumption



Less
Breakdown



More Storage
Area



Less
Deviations



Standby
Cooling



Touch
Screen



PLC
Control



Door Access



Alarms



Safety



Ethernet



Software



Mobile Alert



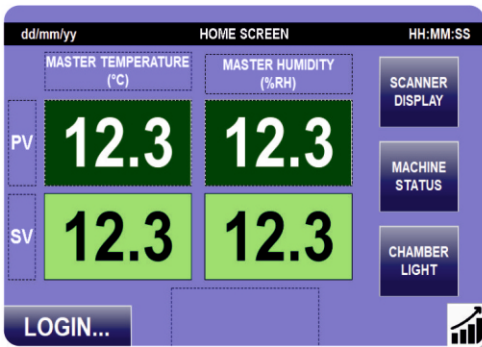
E-mail Alert



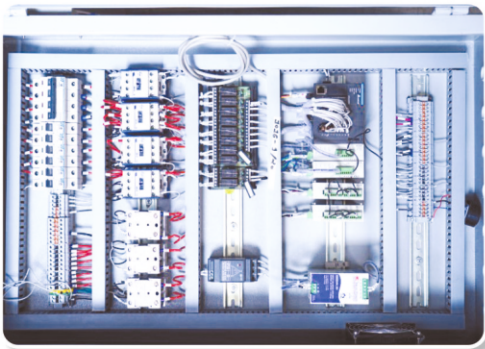
Documents



Inner View



Display (HMI)



Control Panel



Refrigeration Unit

Dew point Control :

- Measure of atmospheric moisture
- Temperature to which air must be cooled in order to be saturated with water vapour already in the air.
- Temperature at which dew or frost will form
- Coil temperature controlled as per Dew point and Psychometric chart.

Features:

- Low energy and Low water Consumption Equipments.
- Works on the principle of Dew point Control
- No Deviations during short-term door opening & power failure.
- No utility Area • More storage area
- Lower Operating cost • Minimum power & water Consumption
- Less deviations • Less breakdowns
- Increase in system & process efficiencies through reduced energy consumption.

Construction :

- Pre-fabricated modular panel type construction with PUF insulation to be assembled on site with floor panels having extra reinforcement to sustain the movement and sample load inside the chamber.
- The inner working chamber is water & vapour tight high-grade stainless steel.
- Chambers are provided with effective air circulation system, heating & cooling systems and humidity generator system.
- Multi pane vacuum sealed observation glass window to view the samples without disturbing the test condition & human safety.
- Heavy duty solid stainless steel duly electro polished wire mesh/perforated type trays are provided which are easy to clean, time & efforts saving, also adjustable for convenience, along with detachable racks with adjustable angles.

Control Systems :

- 7" HMI with TFT LCD Colour touch screen with password protection for all parameter actual status monitoring of utilities like Sensor, Heating & Cooling System, Humidity System.
- Rotronic make 4-20mA sensors for better accuracy.
- PLC with auto tuning facility for accurate control of temperature and humidity conditions.
- Data Storage facility in HMI and PLC Both PLC'S Stored data transfer in software via Ethernet and HMI'S Stored data can be view obtain in PDF form through USB Drive.

Alarm & Safety :

- Temperature deviation & RH deviation Alarm
- Power Failure Alarm
- Continues open door alarm
- Temperature & RH Safety Cutoff
- Low water level Cutoff
- Auto change over Facility for RH Generator & Cooling System

Special Features :

- Special door lock is provided which can opened from inside even if locked from outside.
- Password Protected Door Access.
- Person trapped Emergency stop protection.

Software (21 CFR PART-11 Compliance)

- Log data, Event data, Audit Trail data, E-Records & E-signatures, Graphical analysis & Data acquisition.



Regd. Office : 16 - F, Simandhar Shopping Centre, Nr. L.I.C. office, Highway Nagalpur, Mehsana - 384002, Gujarat, INDIA. **Email :** info@kesarcontrol.com

Mfg. Unit : Plot No. 4809, Shakriba Estate Road, B/h Indo German Tool Room, Phase 4, G.I.D.C. Vatva, Ahmedabad - 382445. Gujarat, INDIA.

Tele : +91 9773456692, +91 7228830796

Mobile : +91 9427613646 **Email :** service@kesarcontrol.com

Service Centres : Ahmedabad ♦ Vadodara ♦ Ankleshwar ♦ Vapi ♦ Hyderabad ♦ Chandigarh ♦ Indore ♦ Mumbai ♦ USA ♦ UK ♦ Canada ♦ Egypt ♦ Bangladesh ♦ Nepal ♦ Nigeria ♦ Kenya ♦ Jordan

NOTE : In our corporate policy of continuing product improvement, KESAR CONTROL SYSTEMS reserve the rights to change product specification without notice.